

OZZERO®

Accessori / Accessories



Raccordo a 4 Vie Z 01/09

Realizzato in acciaio verniciato con polveri termoindurenti, permette di raccordare quattro elementi della trave ad un solo punto

Raccordi a Curva Z 26/07, Z 26/08, Z 26/09

In tubo di acciaio verniciato a polveri termoindurenti per fissare la trave a parete, mediante la bassetta conica Z 02/07 ed il raccordo Z 01/09

Raccordo A 2 Vie Z 01/08

Realizzato in acciaio verniciato con polveri termoindurenti, permette di raccordare due elementi della trave ad un solo punto

4-way Junction Z 01/09

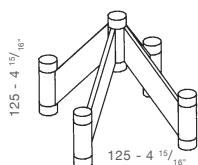
Realized in thermosetting powder coated steel, it creates a junction from the tubular elements of the beam to one single tube for connection

Corner Connector Z 26/07, Z 26/08, Z 26/09

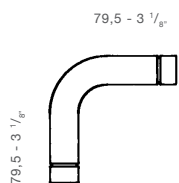
Executed in thermosetting powder coated steel, suitable to connect panels and frames to the beams when used with clamp joint Z 01/05 or for column connection to the wall used with conical base Z 02/07

2-way Junction Z 01/08

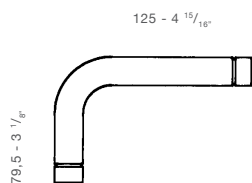
Executed in thermosetting powder coated steel, it creates a junction from two tubular elements of the beam to one single tube for connection



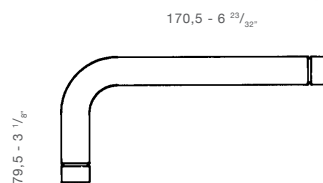
Z 01/09
490 gr.



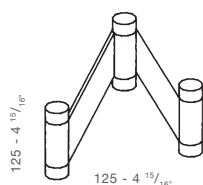
Z 26/07
70 gr.



Z 26/08
100 gr.



Z 26/09
130 gr.



Z 01/08
220 gr.



Morsa Reggipannello Z 11/01

Costituita da due elementi in nylon nero rinforzato con fibre di vetro con una impronta per fissaggio al tubo della trave e tasselli regolabili per contenere pannelli di spessore fino a 20 mm. Gli elementi vengono serrati fra loro mediante una vite nera in nylon

Morsa Multiuso Z 10/01

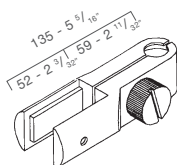
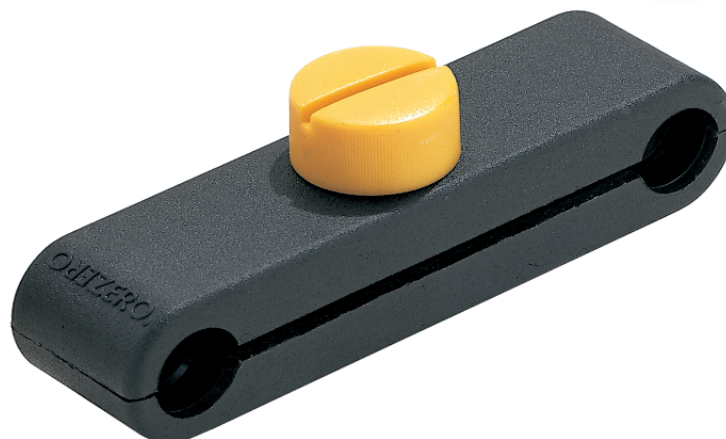
E' costituita da due elementi in nylon nero rinforzato con fibre di vetro, con impronta per l'appoggio su due tubi della trave, che vengono serrati fra loro mediante una vite nera in nylon. Uno dei due elementi è predisposto con fori per fissaggio di ripiani. Le morse possono anche essere utilizzate per sostenere le appenderie

Panel Bracket Z 11/01

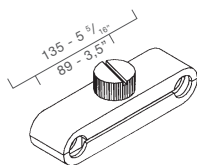
Made of 2 black ABS elements moulded for the mounting on the tube of the beam, with adjustable inserts which will grip panels up to 20 mm thick. The two elements are clamped together with an ABS screw in yellow or black

Universal Bracket Z 10/01

Made of 2 black ABS elements, moulded for the tubes of the beam or of the ladder panel. They are clamped together with a yellow or black screw in ABS. One of the two elements is predrilled with two holes for fixing to shelves or ladder frames. Brackets can also be used to support the garment rails



Z 11/01
115 gr.



Z 11/01
115 gr.

Ripiani

Z 08/01, Z 06/01

Z 06/02, Z 07/01

Z 07/03, Z 07/02

Ripiani in lamiera di acciaio perforato verniciato a polveri termoindurenti, predisposti per l'attacco alla trave mediante morse multiuso. Elementi a settore circolare permettono l'inclinazione dei ripiani, che possono essere dotati di battuta. Prodotto disponibile su richiesta

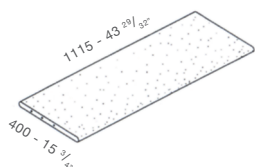
Shelves

Z 08/01, Z 06/01

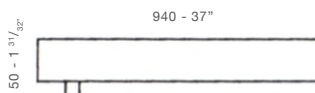
Z 06/02, Z 07/01

Z 07/03, Z 07/02

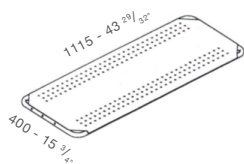
Shelves in perforated sheet steel coated with thermosetting powders or in grey laminate fiberboard, easily mounted on the beam by means of the universal brackets. Steel shelves can be specified with adjustable stays that allow angled installation. A lip can also be provided. Item available only on request



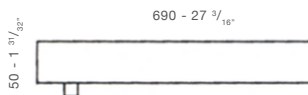
Z 08/01
8000 gr.



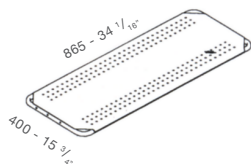
Z 07/01
780 gr.



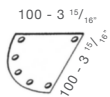
Z 06/01
4780 gr.



Z 07/03
570 gr.



Z 06/02
3700 gr.



Z 07/02
100 gr.

Appenderie

Z 17/01, Z 17/02,
Z 17/03

Barra di appenderia orizzontale in tubo di acciaio da utilizzare fra colonne, vincolata alle estremità mediante mensole e morse multiuso.

Prodotto disponibile su richiesta.

Mensola per Appenderia Z 16/01

Barra a Sbalzo
Z 18/02, Z 18/02

Barra a sbalzo in acciaio verniciato a polveri termoindurenti, con tacche di tenuta per utilizzo da derivazione trave mediante morsa multiuso nelle versioni orizzontale e inclinata. Prodotto disponibile su richiesta.

Garment Rail

Z 17/01, Z 17/02,
Z 17/03

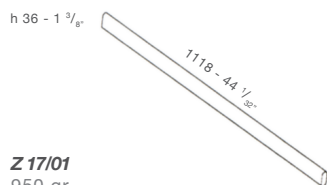
Horizontal garment rail in chromed steel to be used between two columns, to be fixed at its extremities by means of universal brackets.

Item available only on request.

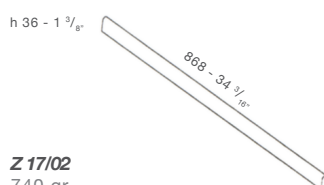
Garment Rail Bracket Z 16/01

Notched Garment
Rail Z 18/02, Z 18/02

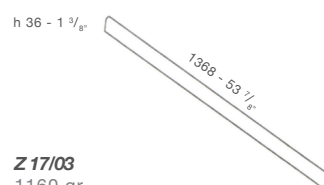
Garment rail in thermosetting powder coated steel, with holding notches to be used as derivation of the beam by means of universal brackets in both horizontal and sloping version. Item available only on request.



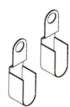
Z 17/01
950 gr.



Z 17/02
740 gr.



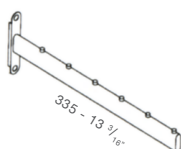
Z 17/03
1160 gr.



Z 16/01
40 gr.



Z 18/01
470 gr.



Z 18/02
400 gr.